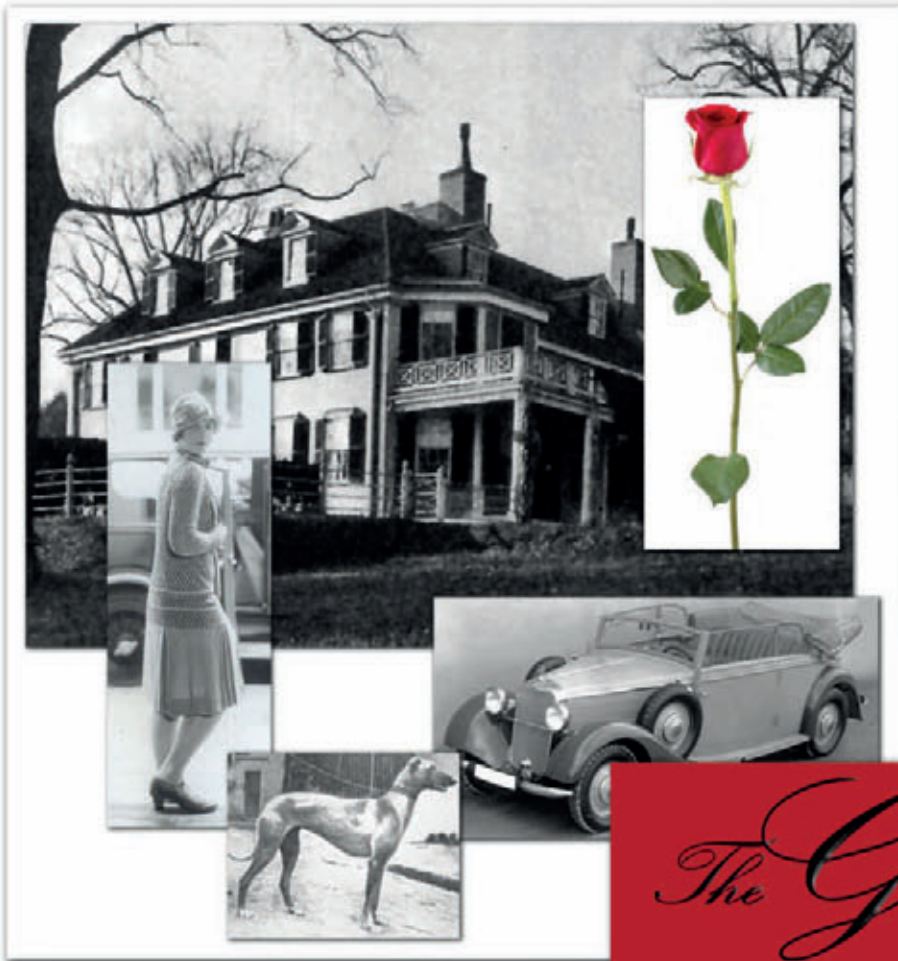


**Portfolio:**

Mary M. Gladden

phone: (706) 742-2065  
cell: (706) 347-1904  
mary@moonpathdesigns.com





*The Great Gatsby*

**Photomontage Project:**

*Vintage photos, combined and manipulated in Photoshop to create a book cover layout for F. Scott Fitzgerald's The Great Gatsby*



F. SCOTT FITZGERALD

*The Stars at Night*  
are **BIG**  
and **Bright**



**What a pity we don't get to enjoy the view.**

**Multipurpose Ad/Poster:**

*Adobe Illustrator, enhanced by Photoshop*





1220 College Ave.  
Athens, Georgia  
706-548-5555

Home

Cakes

Pastries

Contact Us



### Enter to Win!

Come in and register for our weekly giveaway; you can win cupcakes, cookies, or a specialty dessert - a different surprise every week. At the end of November, we will draw from all winners for the grand prize - party catering for up to 50 people.

### Welcome to downtown Athens' finest pastries, cakes and party catering service.

We specialize in unique flavors and the finest natural ingredients. Our pastry chefs are skilled in producing authentic French pastry, elegant wedding and special occasion cakes, delicious desserts, cupcakes, cakes and cookies that will make your party an occasion to remember and your everyday dessert a party.

Come to us for your next party or family celebration. We can provide beautiful, custom designed, cakes, desserts and appetizers for any size occasion, from two to two hundred.

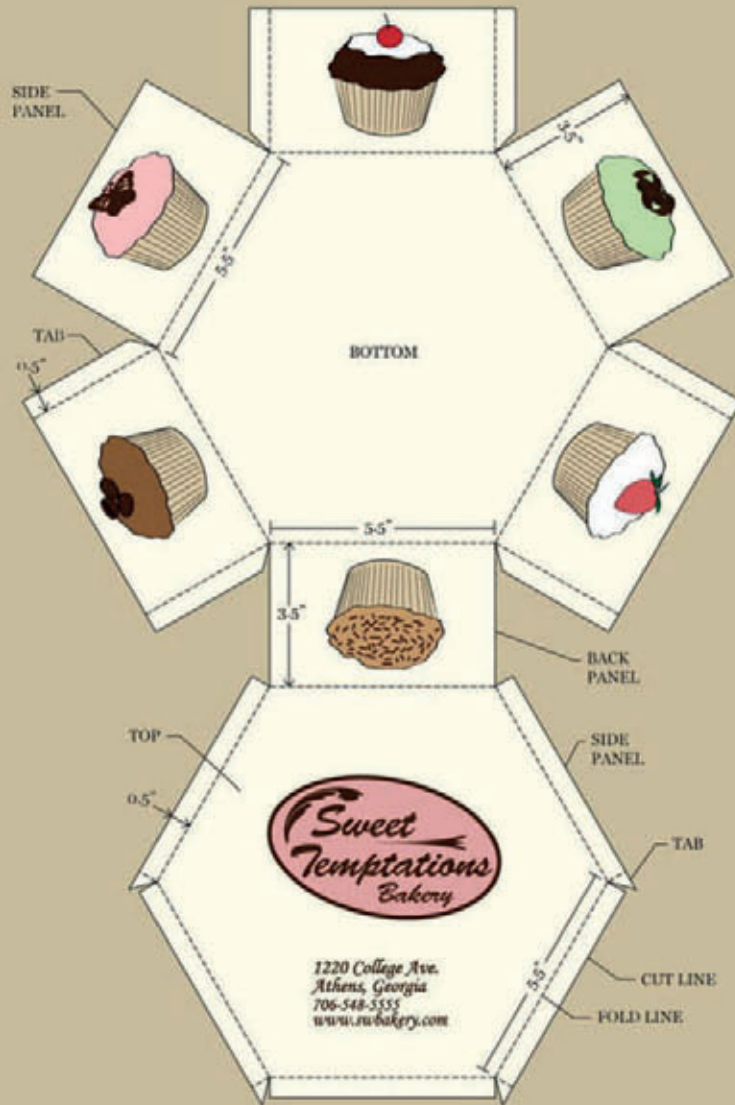
Our in-store café features our pastries and desserts, our special line of light and tasty sandwiches, and Jittery Joe's locally famous coffee in a variety of roasts.



## Logo Design:

Logo Development and it's use in Website Design and corporate branding for a fictional business model, Adobe Illustrator enhanced by Photoshop





DECONSTRUCTED PATTERN



ANGLED VIEW



FRONT VIEW

## Packaging Design:

Hexagonal cupcake box, promotional design for branding with concept sketches, printed on semi-gloss bristol board, Adobe Illustrator

# Cupcake Heaven

Call us (706-548-5555) or  
come in and order your  
special occasion, custom  
party cupcakes.

Try our Mochachino, Key Lime,  
Raspberry Coconut, Banana  
Walnut, or Rum Raisin  
premium flavors.



Is a place on Earth *Sweet Temptations Bakery*  
1220 College Av., Athens



**Just  
go  
with  
it.**

Call us (706-548-5555) or  
come in and order your  
special occasion, custom  
party cupcakes.

*Sweet  
Temptations*  
Bakery

1220 College Av.

Call us (706-548-5555) or  
come in and order your  
special occasion, custom  
party cupcakes.

Try our Mochachino, Key Lime,  
Raspberry Coconut, Banana  
Walnut, or Rum Raisin  
premium flavors.



**Cupcakes make the occasion.**

*Sweet Temptations Bakery, 1220 College Av., Athens*

## Newspaper Ads:

Black and white newspaper layouts,  
Adobe Illustrator, Adobe InDesign





**Magazine Ad:**

*Vineyard label design and advertising layout, Adobe Photoshop layers*

# Arbor Day Foundation

[www.arborday.org](http://www.arborday.org)

Trees  
are  
only as  
important

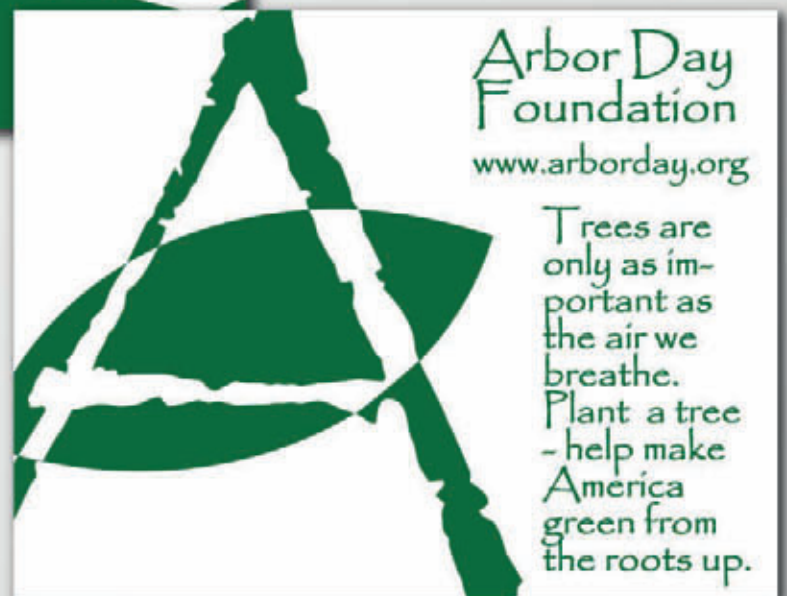
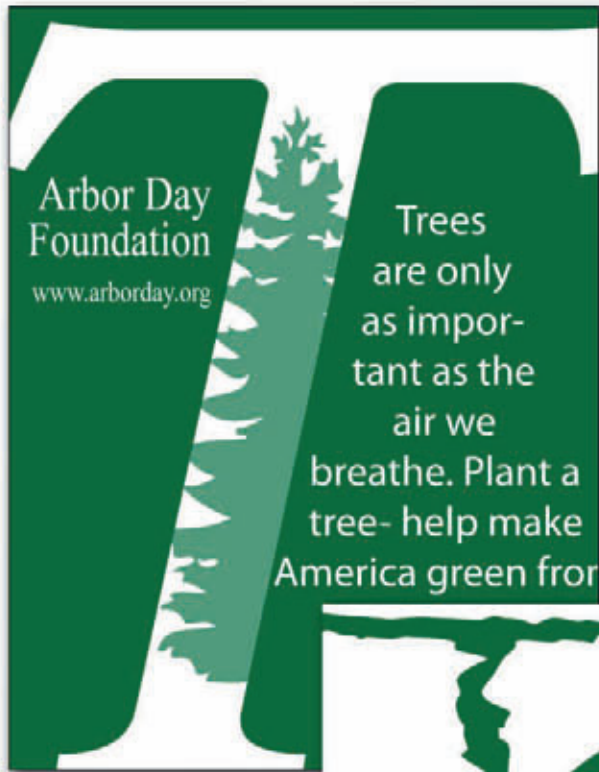
as the air  
we breathe.

Plant a tree -  
help make  
America greener  
from the  
roots up.

## Multi-Purpose Ad:

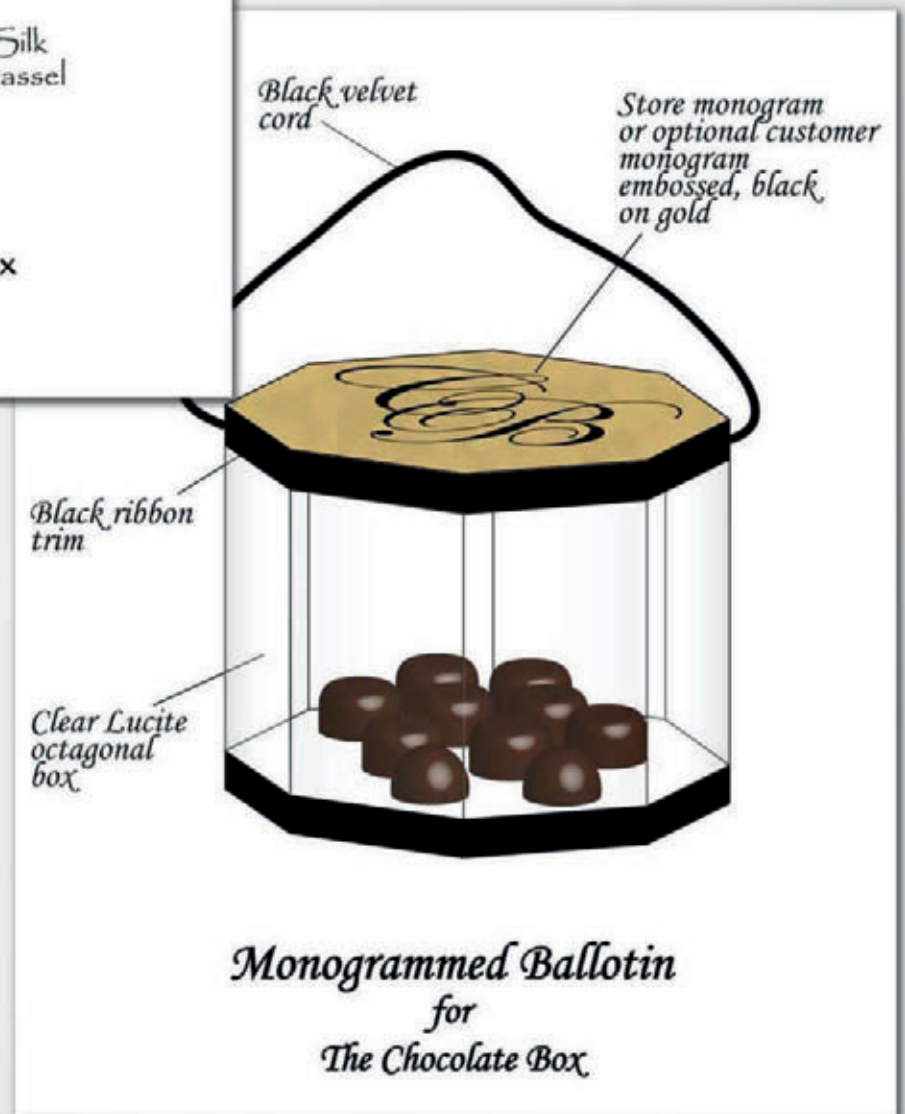
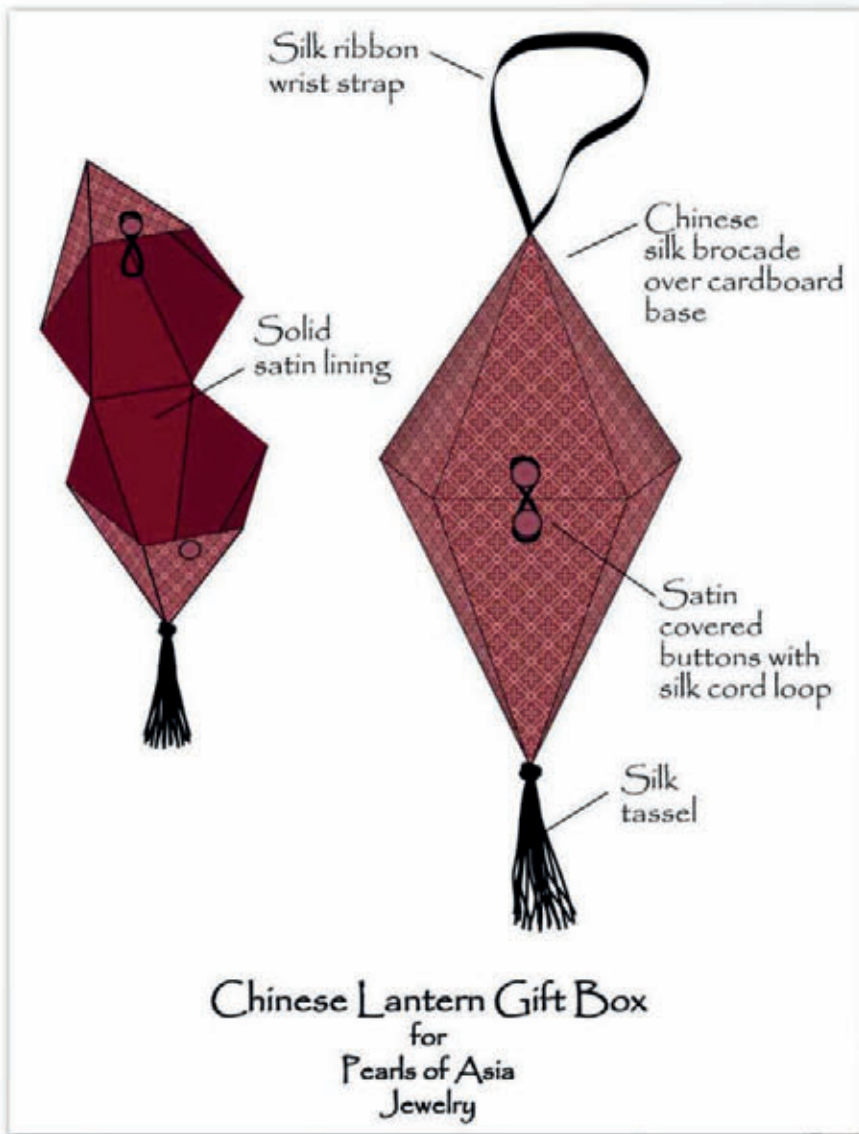
Magazine/newsletter/poster design, Adobe Illustrator





**Multi-Purpose Ad:**

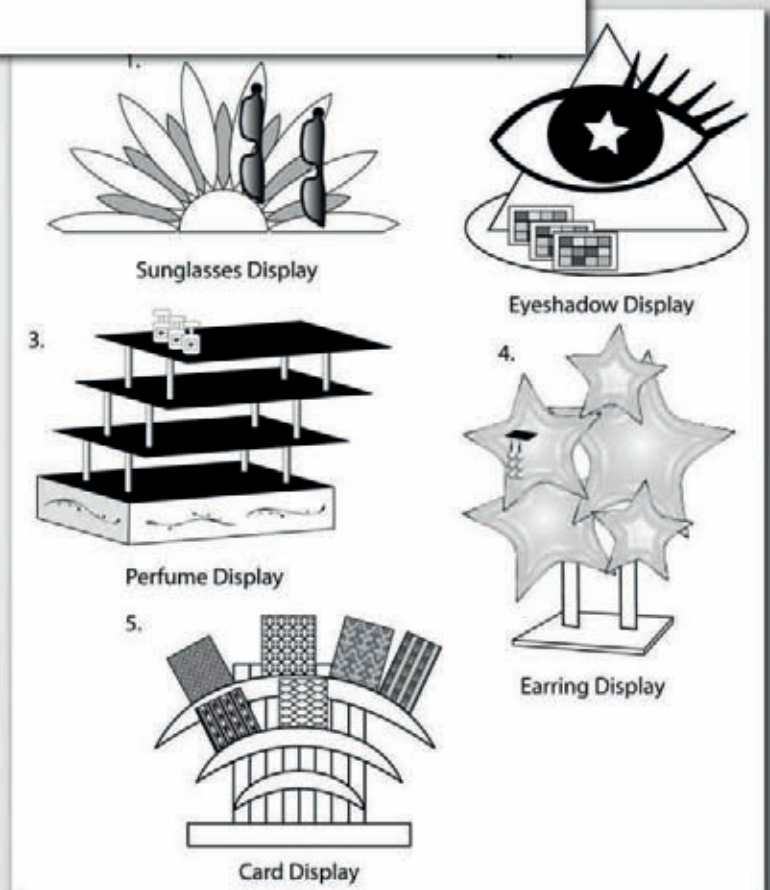
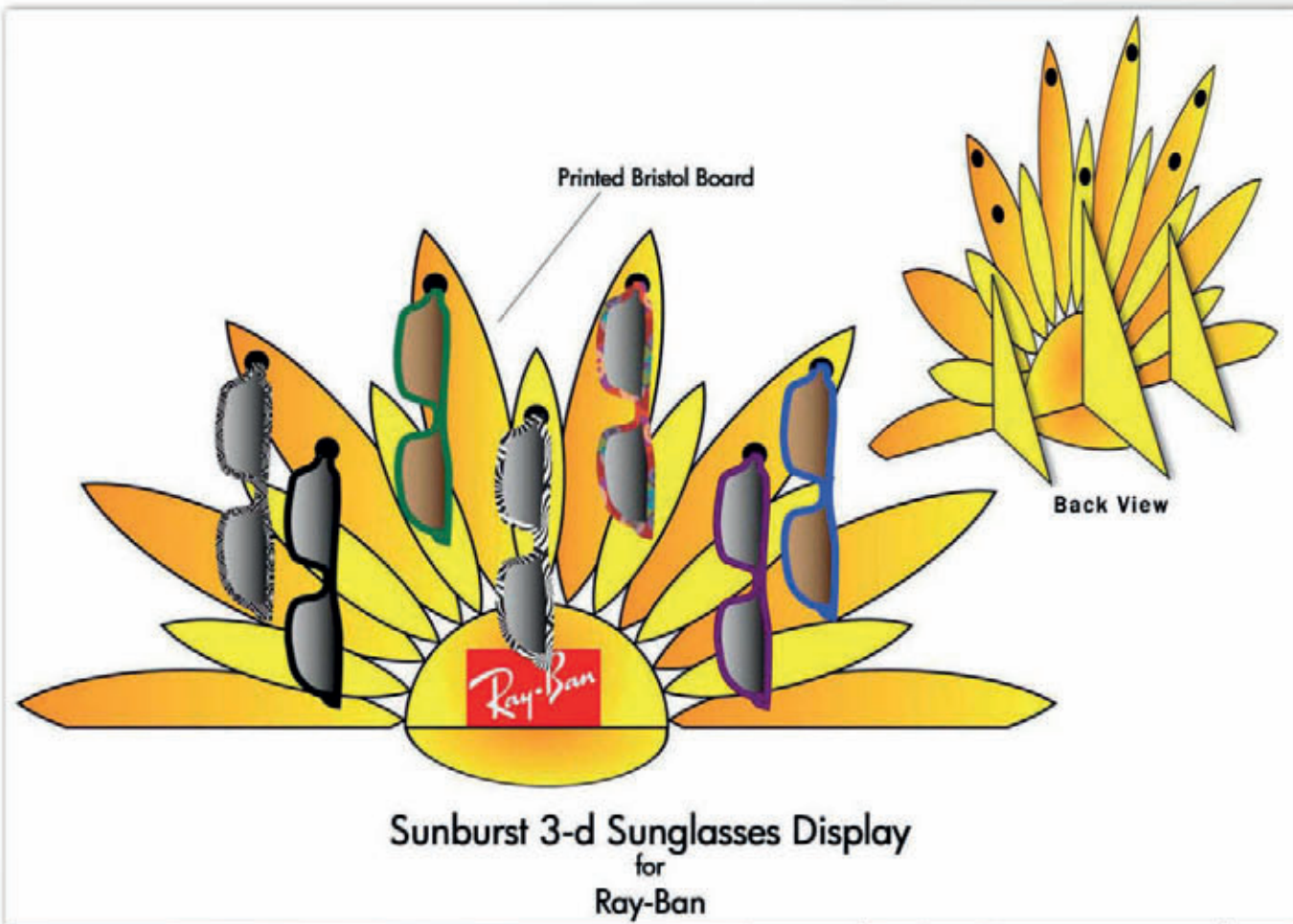
Magazine/newsletter/poster concept roughs, Adobe Illustrator



## Packaging concepts:

Promotional packaging designs, Adobe Illustrator





### Point-of-Purchase Display:

Design for proposed 3-d, printed bristol board display  
with concept sketches, Adobe Illustrator



The UGA Performing  
Arts Center Presents:

# *Coppélia*

*Performed by:*

THE  
MOSCOW  
FESTIVAL  
BALLET

*Join us for an evening  
of culture and fun.*

The Moscow Festival Ballet was founded in 1989 by its artistic director former Bolshoi Ballet star Sergei Radchenko, who wanted to form an independent company representing the best of Russian classical ballet.

*Coppélia* is one of the worlds best loved comic ballets; music by Leo Delibes; choreography by Arthur Saint-Leon. The story, based on the E.T.A. Hoffmann story "Der Sandmann", is the tale of an eccentric inventor, Dr Coppélius, who creates the beautiful life-size mechanical doll, *Coppélia*.

Location:  
University of Georgia Performing Arts Center,  
Athens, GA

Date and Time:  
Sunday, February 28, 7:30 pm

Tickets:  
\$30 adults, \$25 students and children.

Place  
Stamp  
Here

---

---

---

---

## Direct Mail Piece:

*Promotional postcard, Adobe Illustrator, Photoshop enhancement*





**Apples:**

*Variations on a theme, Adobe Illustrator enhanced by Photoshop*



**Apples:**

*Variations on a theme, Adobe Illustrator enhanced by Photoshop*

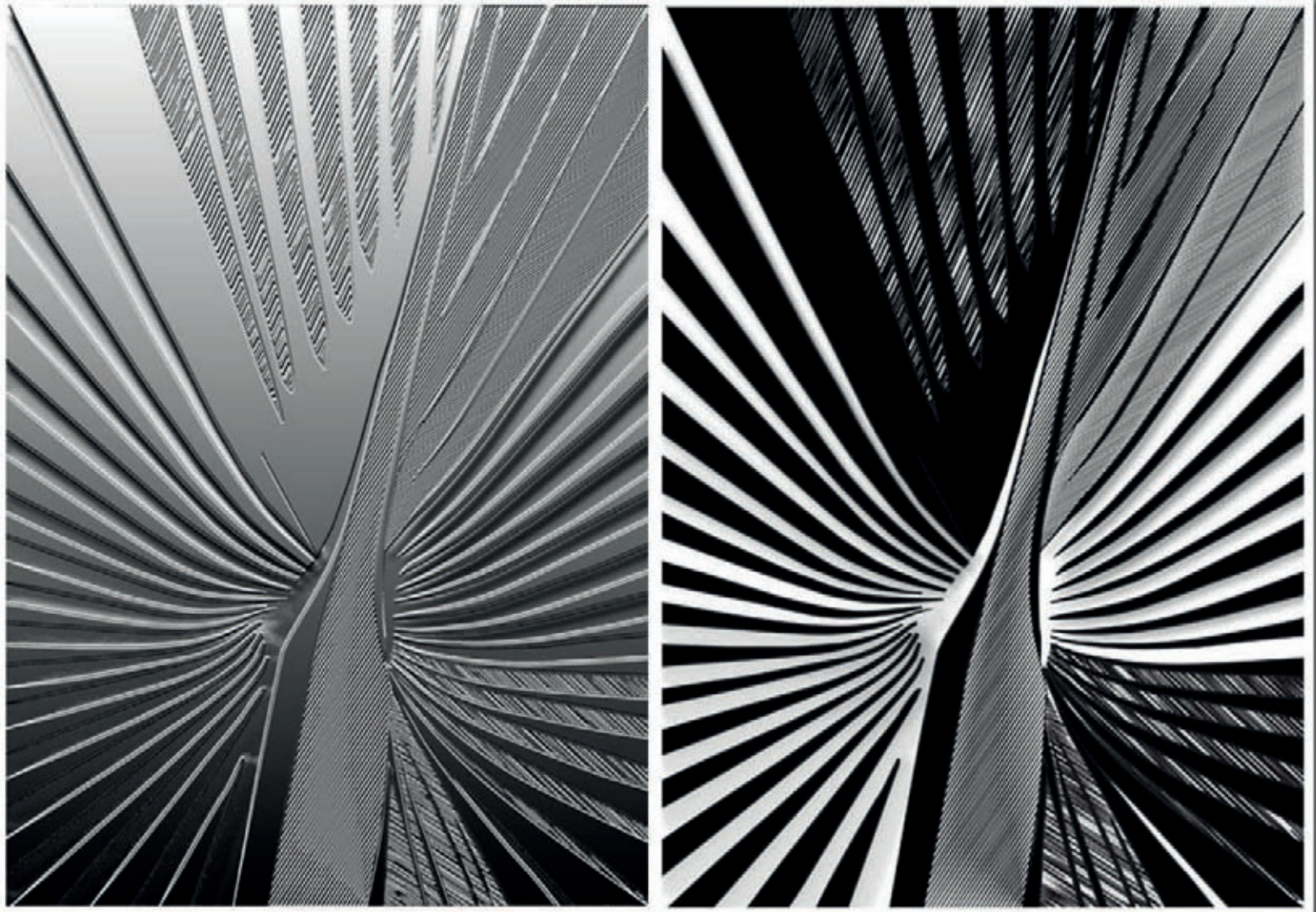




**Cat Portrait - "Mit-Si Ling":**

*Original in Adobe Illustrator, enhanced by Photoshop*

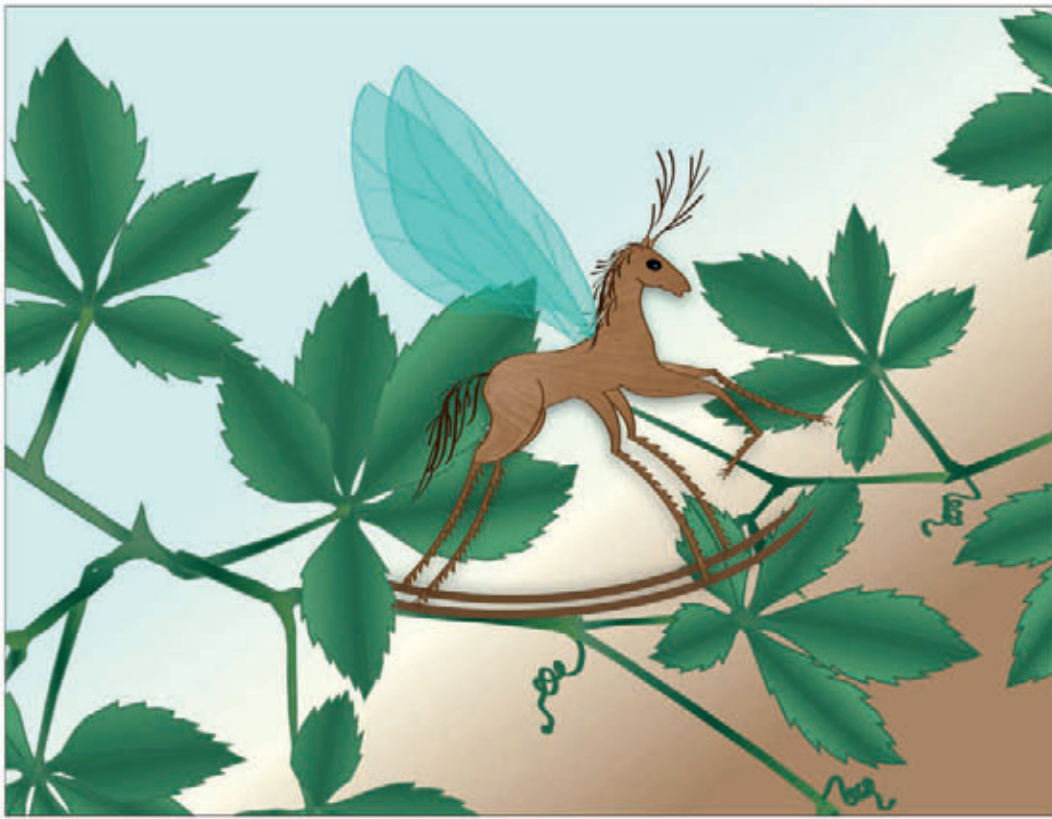




**“Palmleaf”:**

*Original in Adobe Illustrator (right), variation enhanced by Photoshop*





**A**ll right,' said the Gnat. 'half way up that bush, you'll see a Rocking-horse-fly, if you look. It's made entirely of wood, and gets about by swinging itself from branch to branch.' 'What does it live on?' Alice asked, with great curiosity. 'Sap and sawdust,' said the Gnat. 'Go on with the list'.

### Spot Illustrations:

*"Rocking-horse-fly",*

*"Snap-dragon-fly"*

Lewis Carroll's

Through the Looking-Glass  
Chapter 3, "Looking-Glass  
Insects"



**A**nd there's the Dragon-fly.' 'Look on the branch above your head,' said the Gnat, 'and there you'll find a Snap-dragon-fly. Its body is made of plum pudding, its wings of holly-leaves, and its head is a raisin burning in brandy.' 'And what does it live on?' 'Frumenty and mince pie', the Gnat replied; 'and it makes its nest in a Christmas box.'

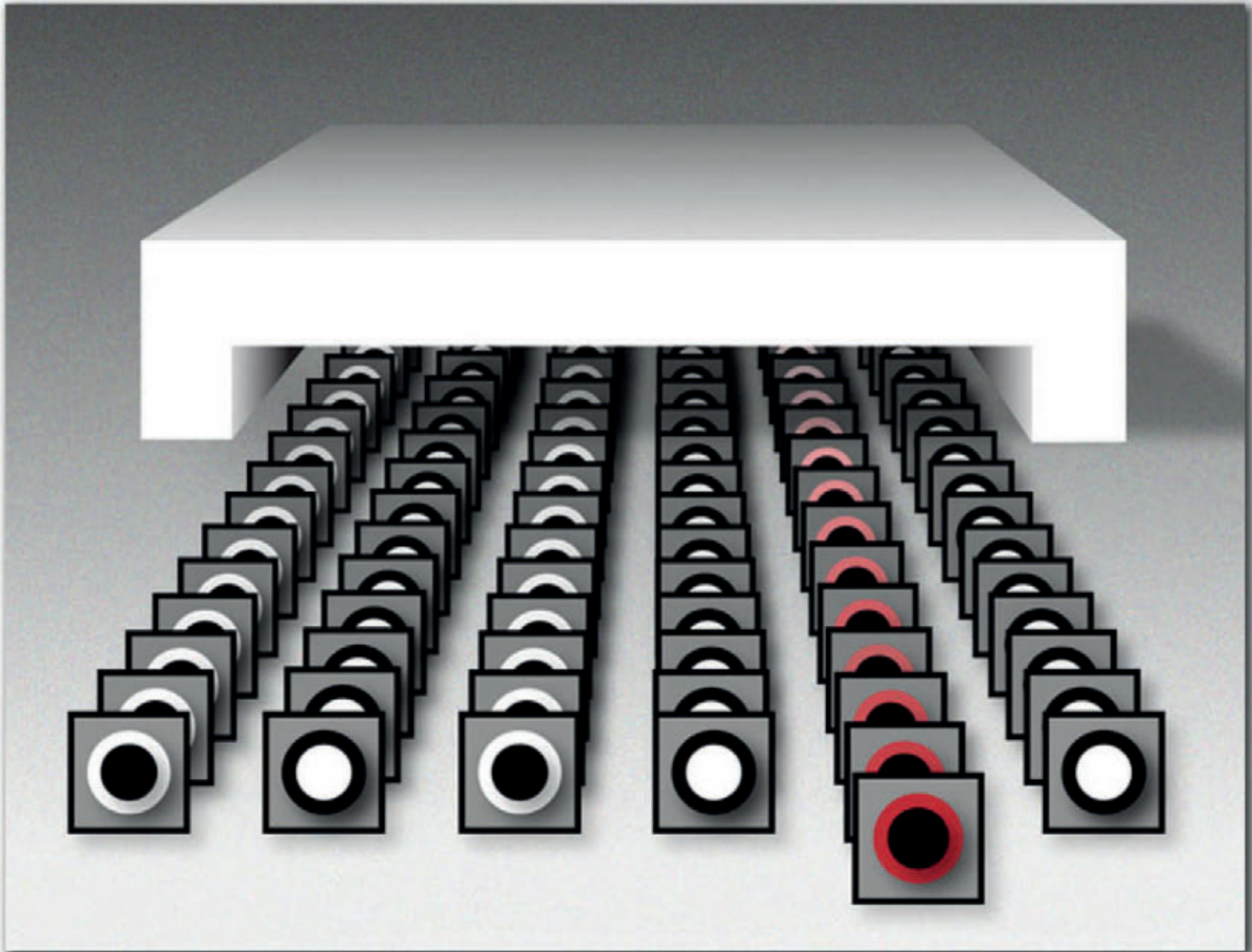


**C**rawling at your feet,' said the Gnat, (Alice drew her feet back in some alarm). 'you may observe a Bread-and-Butterfly. Its wings are thin slices of Bread-and-Butter, its body is a crust, and its head is a lump of sugar.' 'And what does IT live on?' 'Weak tea with cream in it.'

## Spot Illustrations:

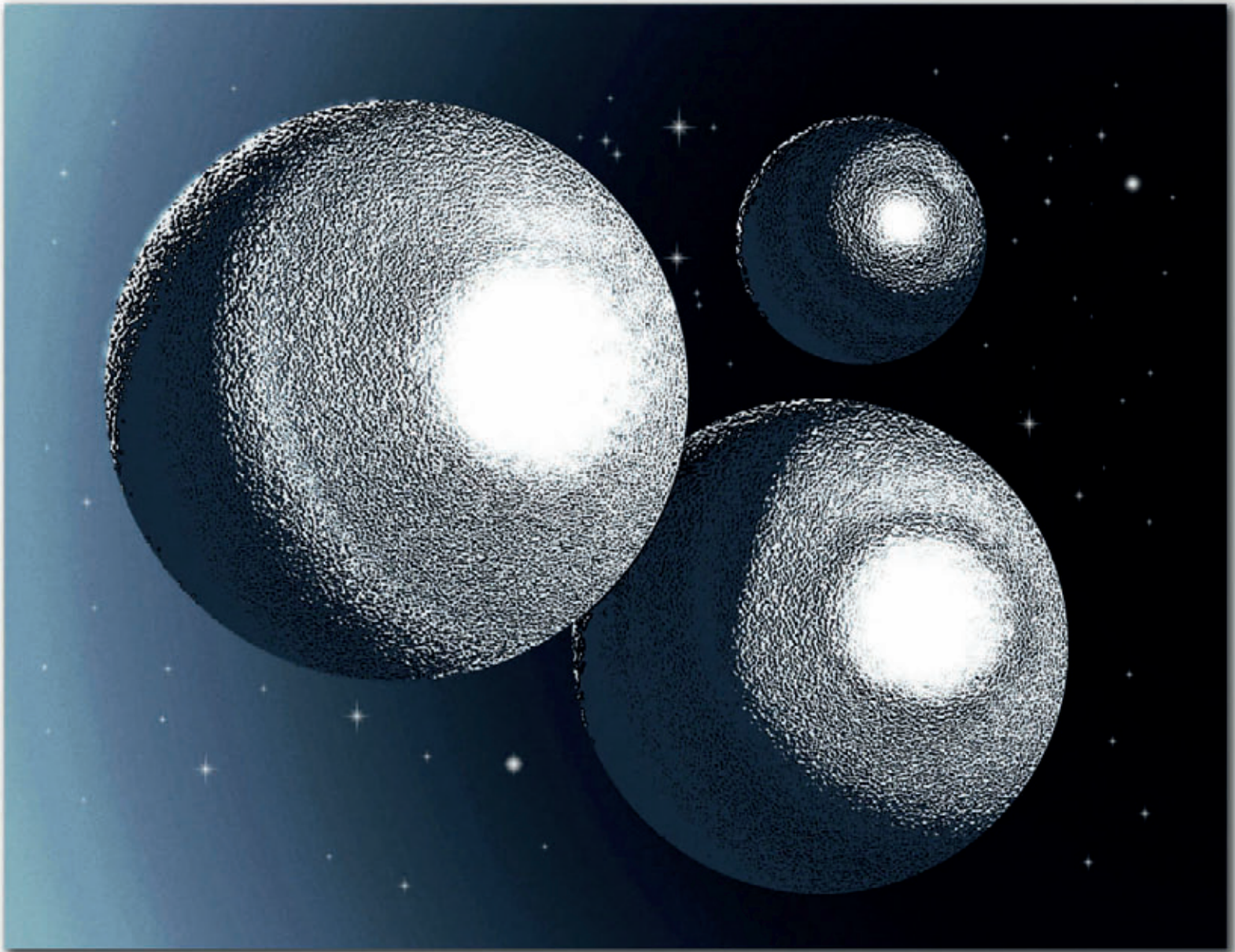
*"Bread-and-Butterfly", Lewis Carroll's Through the Looking-Glass  
Chapter 3, "Looking-Glass Insects"*





**“Redshift”:**

*Adobe Illustrator enhanced by Photoshop*



**“Worlds of Steel”:**

*Adobe Illustrator enhanced by Photoshop*



# Saturn

## a Change of Seasons

**L**ooming like a giant flying saucer in our outer solar system, Saturn puts on a show as the planet and its magnificent ring system nod majestically over the course of its 29-year journey around the Sun. These Hubble Space Telescope images, captured from 1996 to 2000, show Saturn's rings open up from just past edge-on to nearly fully open as it moves from autumn towards winter in its Northern Hemisphere.

Saturn's equator is tilted relative to its orbit by 27 degrees, very similar to the 23-degree tilt of the Earth. As Saturn moves along its orbit, first one hemisphere, then the other is tilted towards the Sun. This cyclical change causes seasons on Saturn, just as the changing orientation of Earth's tilt causes seasons on our planet. The first image in this sequence, on the lower left, was taken soon after the autumnal equinox in Saturn's Northern Hemisphere (which is the same as the spring equinox in its Southern Hemisphere). By the final image in the sequence, on the upper right, the tilt is nearing its extreme, or winter solstice in the Northern Hemisphere (summer solstice in the Southern Hemisphere).

Astronomers are studying this set of images to investigate the detailed variations in the color and brightness of the rings. They hope to learn more about the rings' composition, how they were formed, and how long they might last. Saturn's rings are incredibly thin, with a thickness of only about 30 feet (10 meters). The rings are made of dusty water ice, in the form of boulder-sized

and smaller chunks that gently collide with each other as they orbit around Saturn. Saturn's gravitational field constantly disrupts these ice chunks, keeping them spread out and preventing them from combining to form a moon. The rings, as shown here, have a slight pale reddish color due to the presence of organic material mixed with the water ice.

These images of Saturn, taken with the Wide Field Planetary Camera 2 onboard Hubble, were collected by Richard French (Wellesley College), Jeff Cuzzi (NASA/Ames), Luke Dones (SwRI), and Jack Lissauer (NASA/Ames), and have been prepared for presentation by the Hubble Heritage Team.

Saturn is about 75,000 miles (120,000 km) across, and is flattened at the poles because of its very rapid rotation. A day is only 10 hours long on Saturn. Strong winds account for the horizontal bands in the atmosphere of this giant gas planet. The delicate color variations in the clouds are due to smog in the upper atmosphere, produced when ultraviolet radiation from the Sun shines on methane gas. Deeper in the atmosphere, the visible clouds and gases merge gradually into hotter and denser gases, with no solid surface for visiting spacecraft to land on.

The Cassini/Huygens spacecraft, launched from Earth in 1997, is well on its way to the Saturn system. It will arrive in 2004 to land a probe on Titan, Saturn's largest moon, and to orbit the planet for four years for a detailed study of the entire Saturn system.

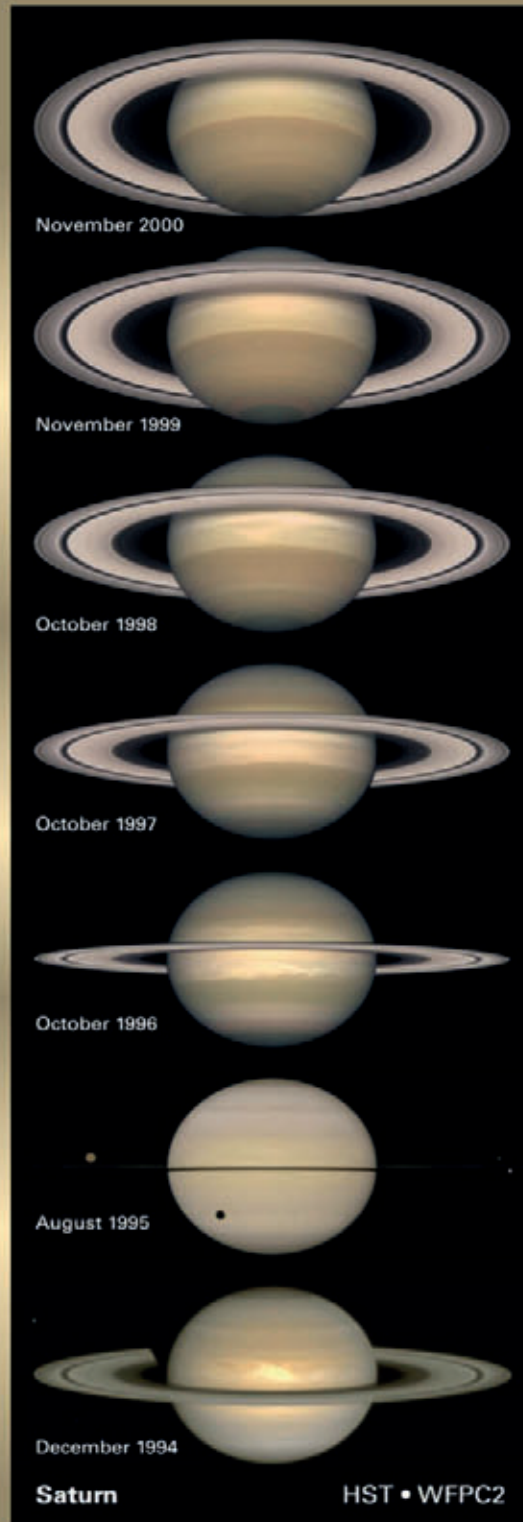


Image Credits for seven-panel Saturn image: NASA, The Hubble Heritage Team (STScI/AURA), R. French (Wellesley College), J. Cuzzi (NASA/Ames), L. Dones (SwRI), J. Lissauer (NASA/Ames), E. Karkoschka (University of Arizona Lunar & Planetary Lab), R. Beebe (New Mexico State University), D. Gilmore, and L. Bergeron (STScI).

Credit: NASA and The Hubble Heritage Team (STScI/AURA)  
Acknowledgment: R.G. French (Wellesley College)  
[http://heritage.stsci.edu/2001/15/fast\\_facts.html](http://heritage.stsci.edu/2001/15/fast_facts.html)

The Hubble Heritage Project

### Poster:

Poster design for the Hubble Heritage Project,  
Adobe Illustrator and InDesign





**"Starport":**

*Other-worldly starscape, Adobe Illustrator enhanced by Photoshop*